

**Building a
Climate
Change
Responsive
Namakwa
District**



Overview

Introduction to Namakwa District

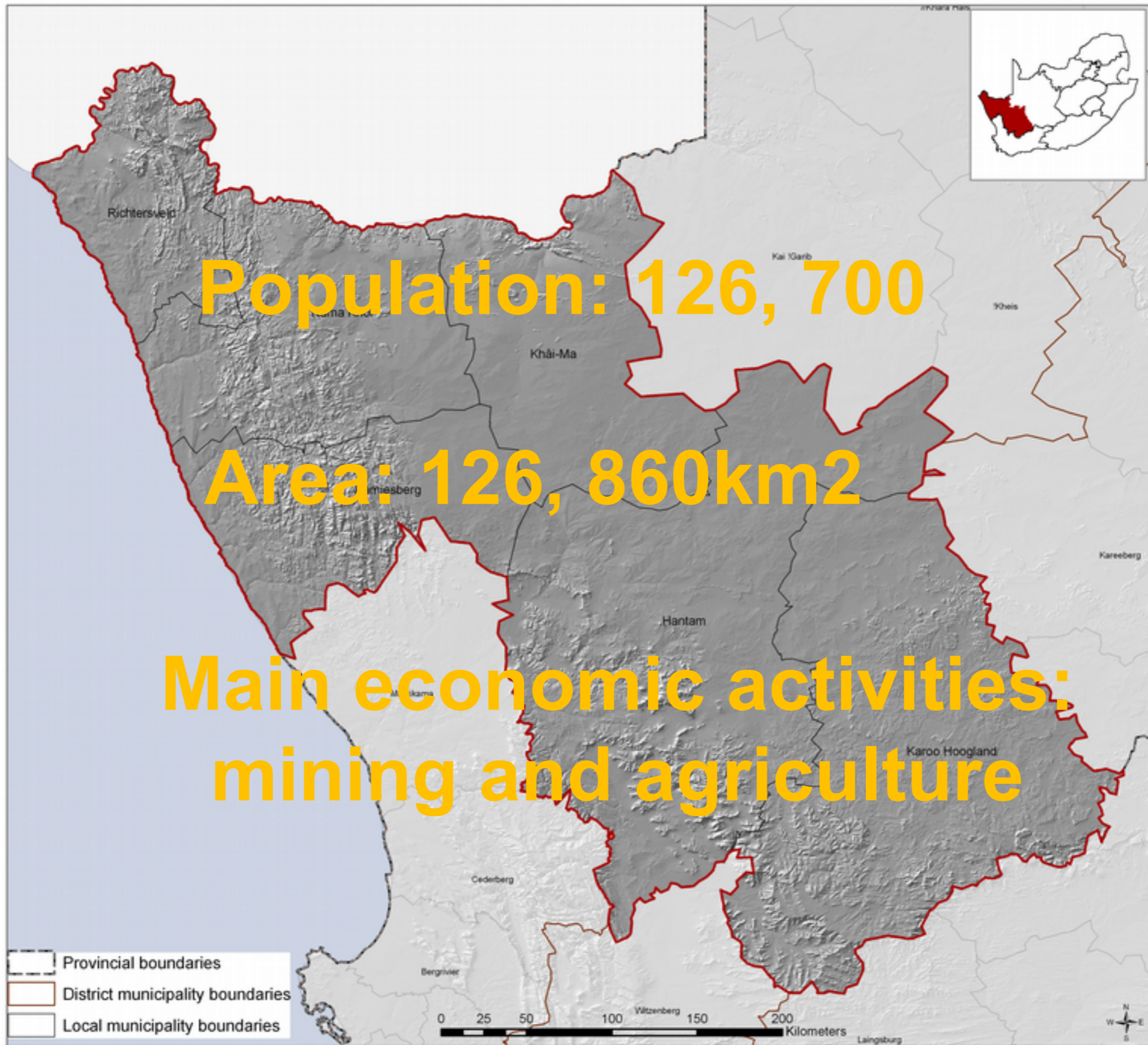
Climate change response work there to date

Lessons Learned

Gaps and Challenges

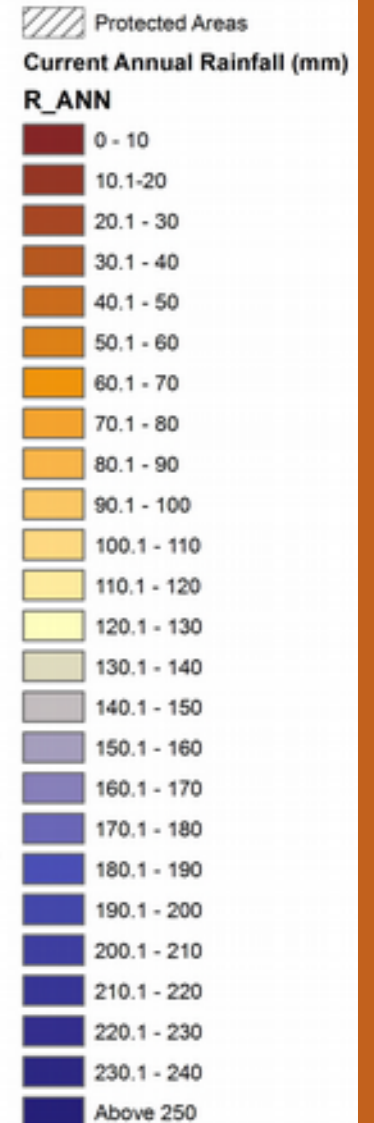
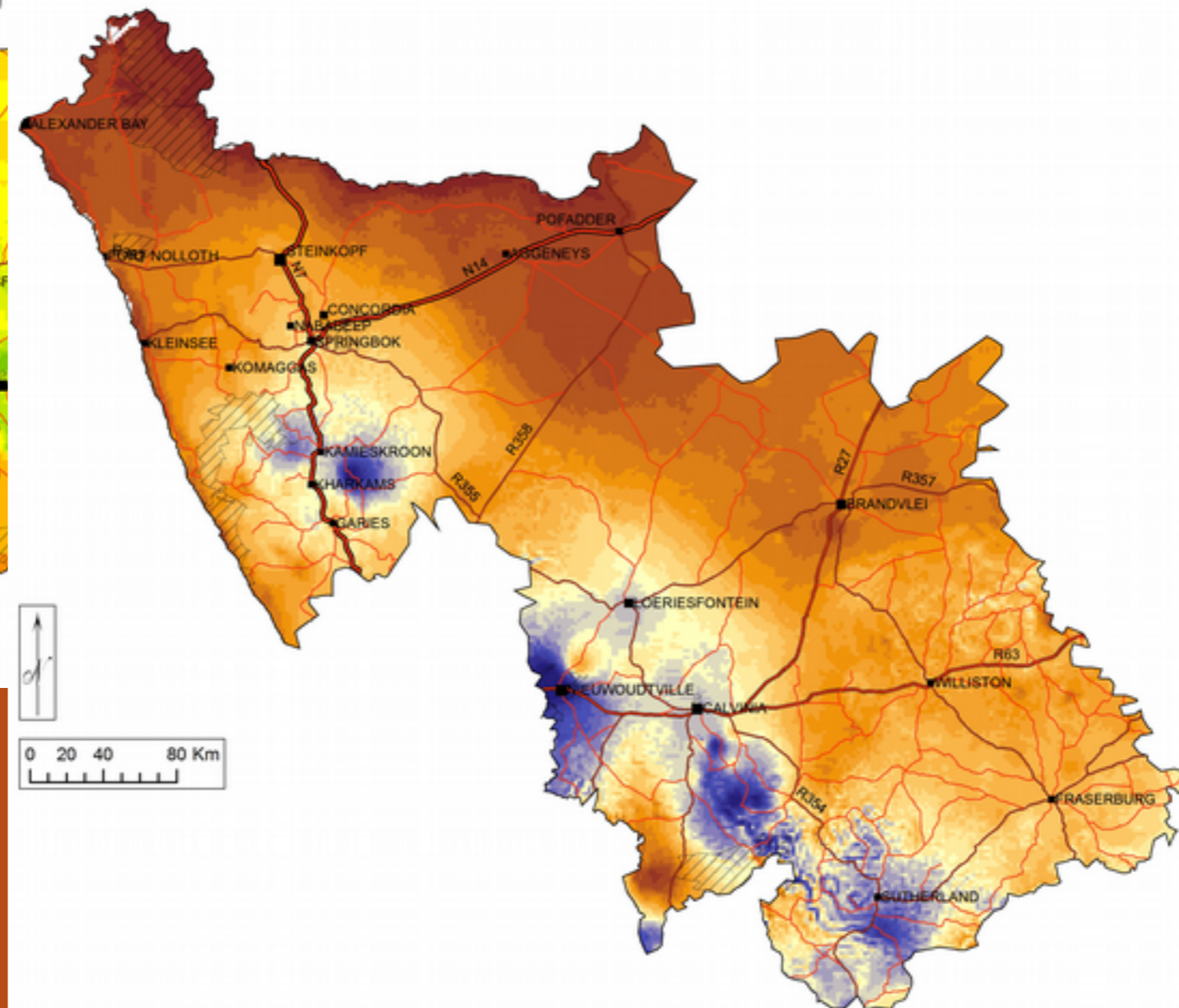
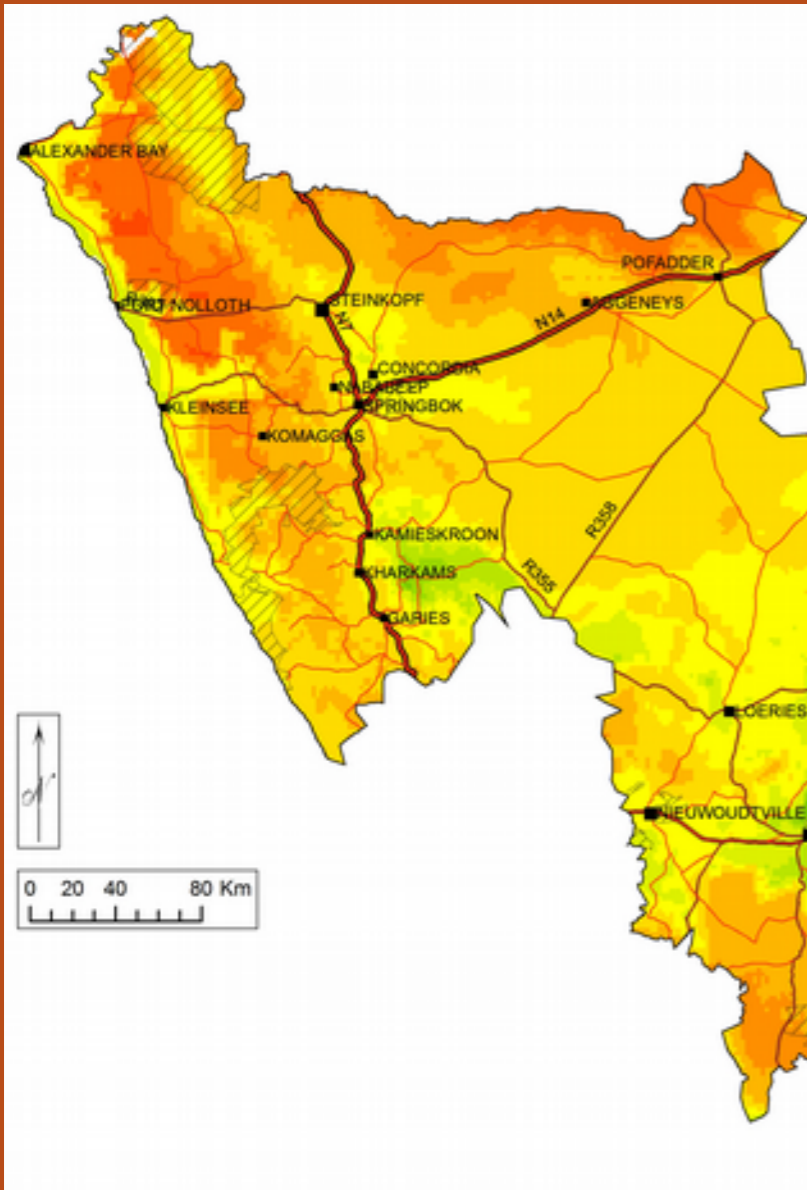
All climate maps shown are from Midgley, G, and S Holness. 2012. *Bio-physical impacts of climate change for the Namakwa District: Expert Report*, in Bourne A, Donatti C, Holness S, and Midgley G. 2012. Climate change vulnerability assessment for the Namakwa District Municipality. Full technical report. Conservation South Africa.





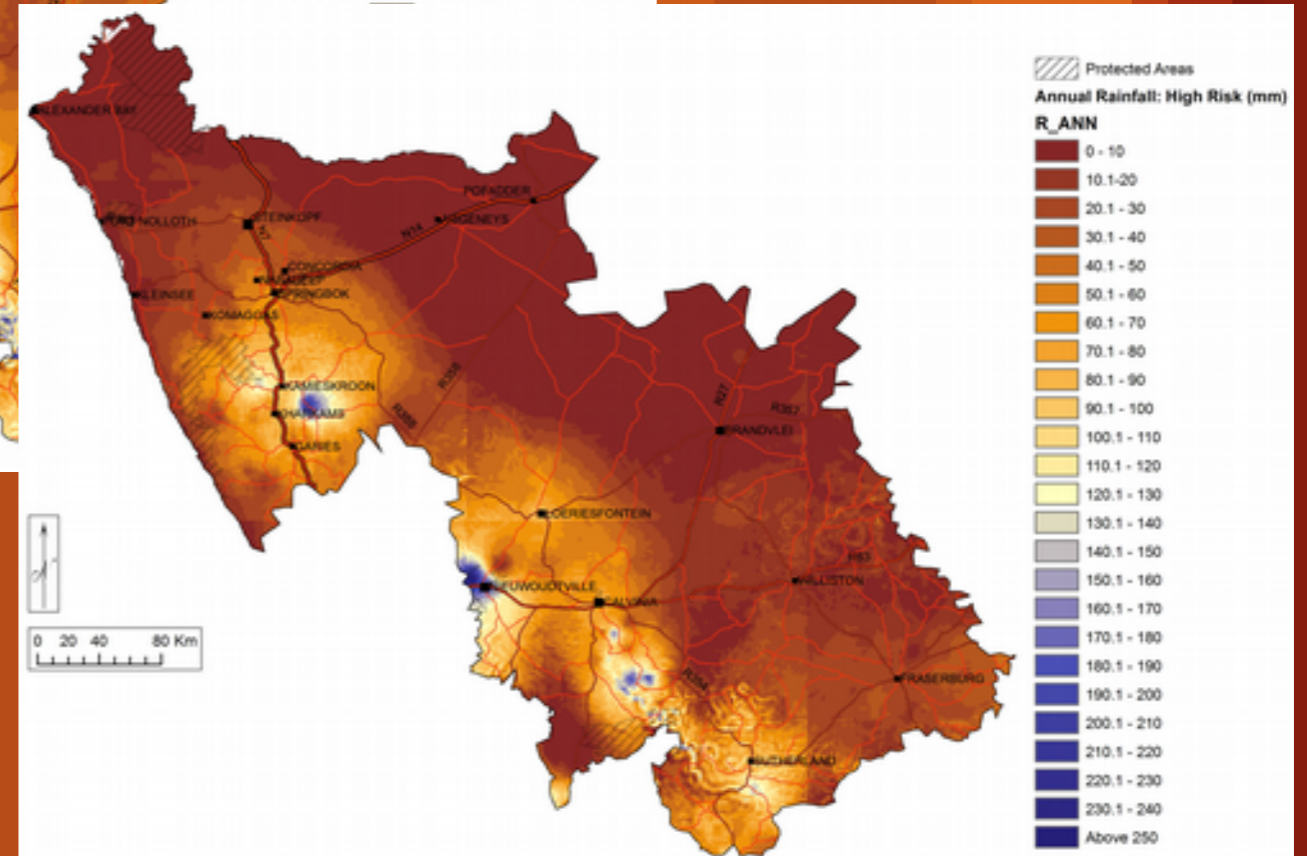
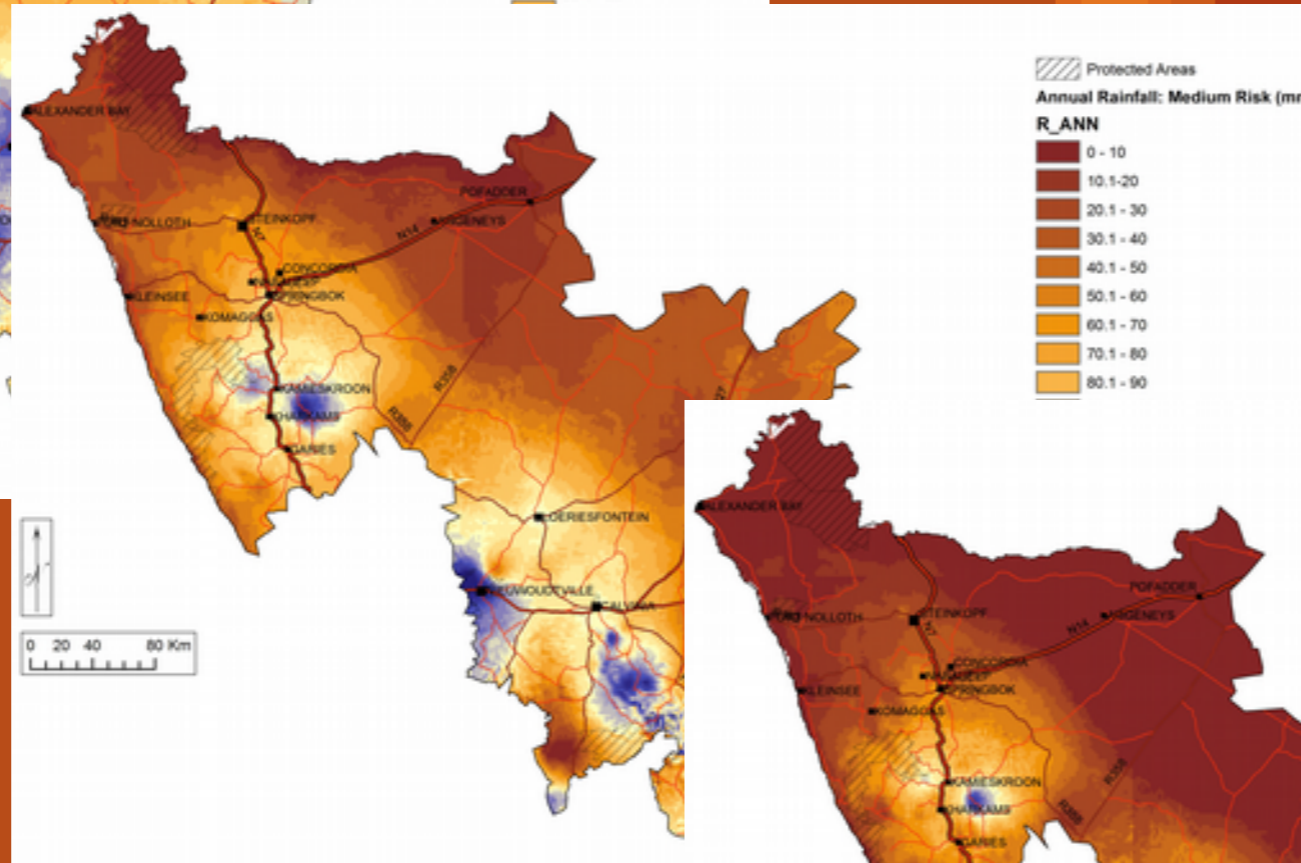
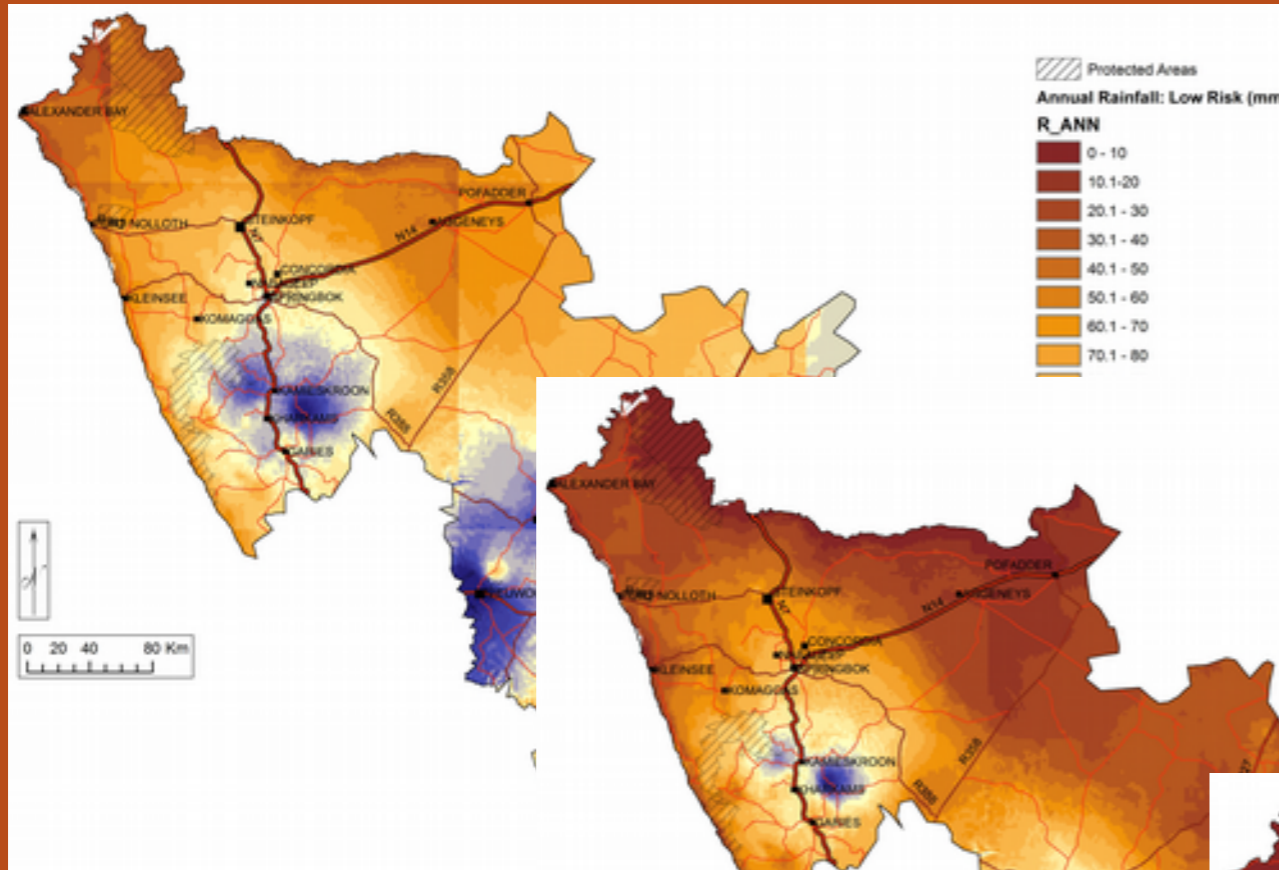
Current Climate

Pretty hot



Pretty dry

Climate Impacts Scenarios

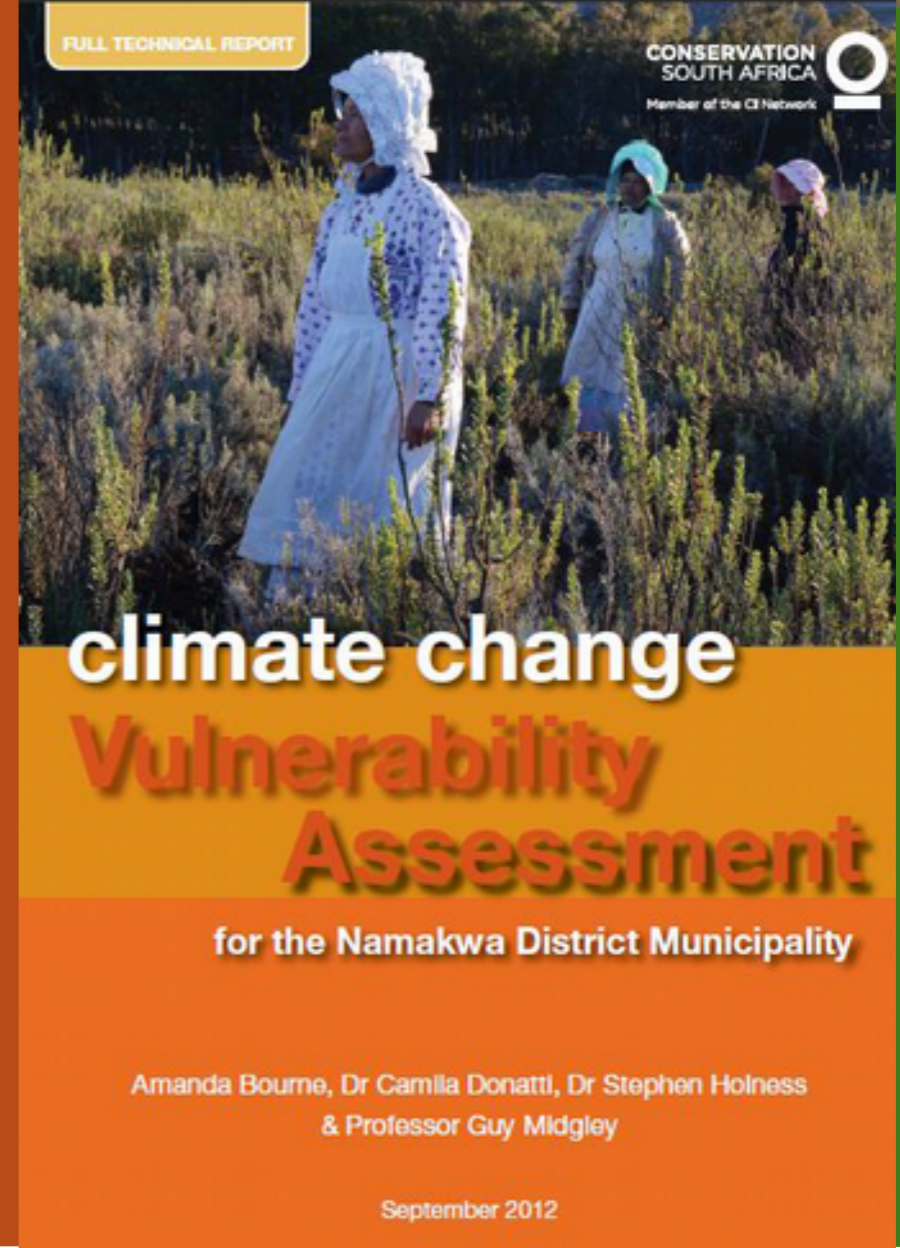
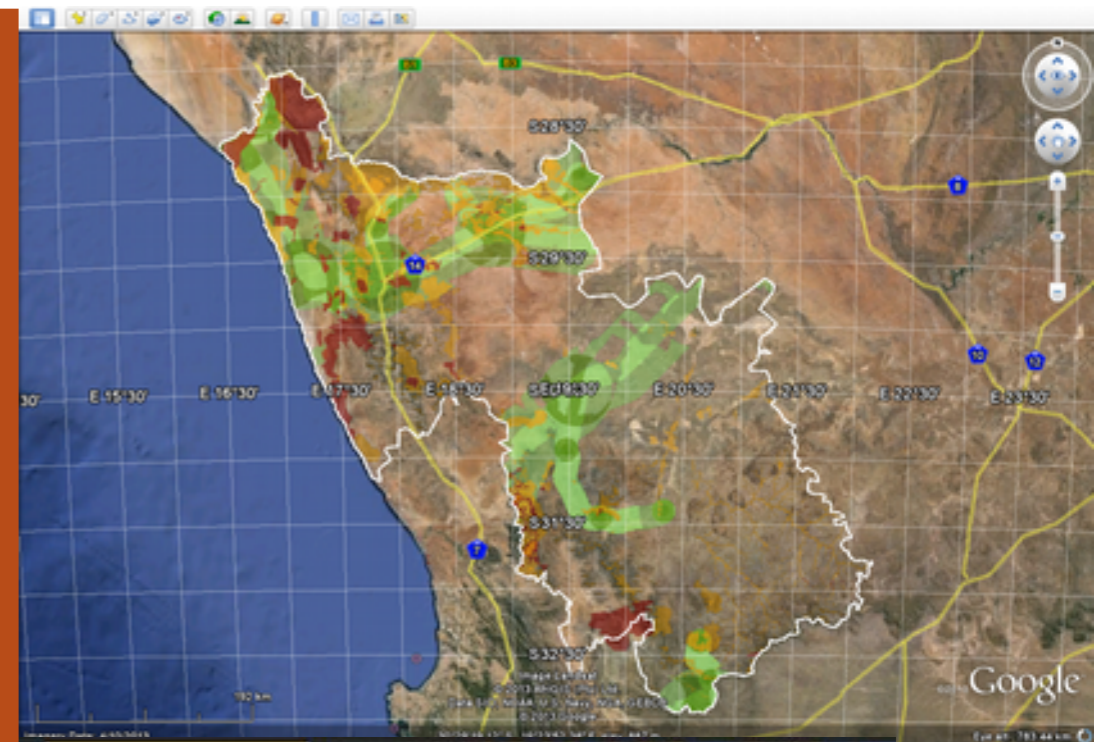


Getting drier?

Rainfall projections more variable

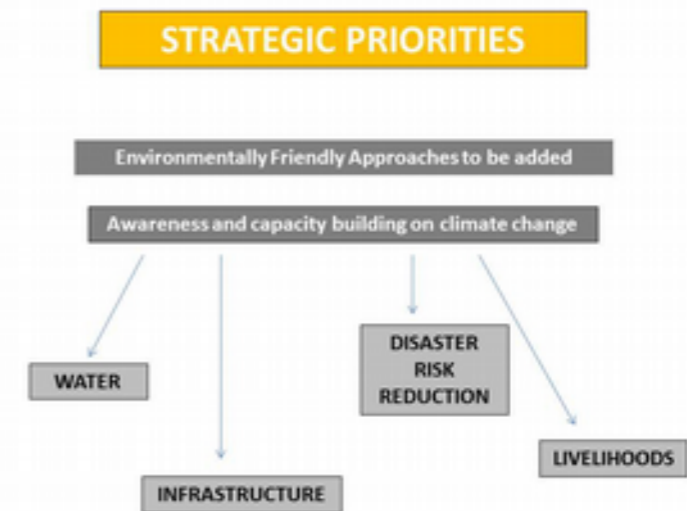
CC response in NDM

- Climate change integrated into Disaster Management Plan 2010/11
- Climate Change Vulnerability Assessment for the District 2012
- Several climate focused conferences and learning exchanges, 2012/13
- Renewable Energy Spatial Planning Tool 2013
- Lessons to inform Provincial Northern Cape Climate Change Response Policy
- Rollout of Let's Respond Toolkit in



Let's Respond

- Applying the toolkit through a series of workshops - District and local
- Introduce climate impacts
- Discuss role of local municipalities in climate response
- Map out climate vulnerability
- Mobilise local experience with responding to weather related extreme events
- Introduce toolkit
- Evaluate IDPs and projects for climate responsiveness
- Facilitate climate responsive planning, project design and budgeting
- Encourage lessons sharing with other municipalities, departments, and institutions



Key lessons

- SENSITISING
- LINKING
- MAINSTREAMING
- SPATIAL REPRESENTATION OF INFORMATION
- LOCAL CHAMPION
- FUNDING
- HAVE FUN



Gaps and Challenges

- Can be difficult to get people together and stay focused
- Difficult to allocate responsibilities for climate response
- Difficult to reach clearly stated and signed off objectives
- Change is slow
- Clear national directive to local municipalities to include climate change in KPAs would help
- Integration of socio-economic vulnerabilities is challenging and is a gap for us
- Historical climate trends for Namakwa would be really useful too
- Can't Walk Away



Supported by:



Federal Ministry for the Environment, Nature Conservation and Nuclear Safety

based on a decision of the Parliament of the Federal Republic of Germany



Nurture
Restore
Innovate



giz



environmental affairs

Department:
Environmental Affairs
REPUBLIC OF SOUTH AFRICA



cooperative governance

Department:
Cooperative Governance
REPUBLIC OF SOUTH AFRICA

**CONSERVATION
SOUTH AFRICA**

Member of the CI Network

